

विद्यया ऽ मृतमश्नुते



एन सी ई आर टी
NCERT

Students Feedback Report (2018-19)

- **Student Feedback on Course**
- **Students' Feedback on the Programme and Teaching**

Regional Institute of Education

(National Council of Educational Research and Training)

Shyamla Hills, Bhopal, Madhya Pradesh

NAAC accredited A+ grade institute

Feedback Report (Session: 2018-19)

1 Introduction

Feedback is very important aspect of teaching learning process. It can be defined as information about reactions to a product, a person's performance of a task, etc. which is used as a basis for improvement. Keeping this in view, a mechanism of taking feedback from students is initiated in the institute in last years by IQAC team. In any educational institution, course and teaching are very important aspects for overall development of the students. Online Google forms were developed to collect the feedback. Following questionnaires (forms), with small modifications, provided by NAAC are used to collect the feedback from students regarding course and overall teaching learning process-

1. Questionnaire no 1: Student Feedback on Course
2. Questionnaire no 2: Students' Feedback on the Programme and Teaching

2 Analysis and interpretation of the feedback

2.1 Student Feedback on course

Course wise feedback is collected from the students. Students were required to rate the courses on the following attributes using the 4 - point scale shown. The same format is used for every course.

4.00	3.00	2.00	1.00
A	B	C	D
Very Good	Good	Satisfactory	Unsatisfactory

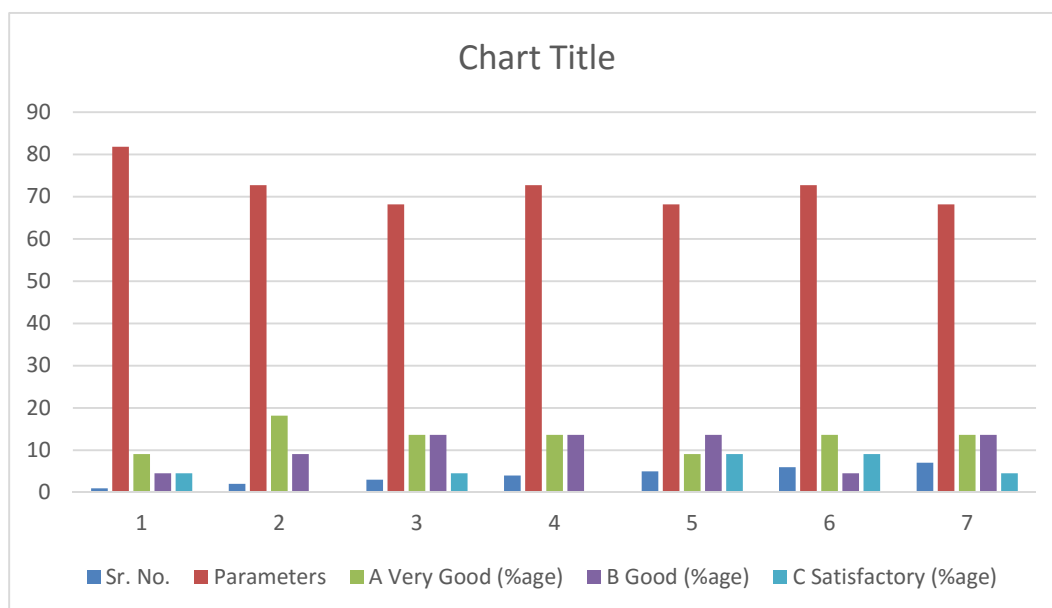
Institute runs courses, namely, two-year M. Ed., two year B. Ed., four year B. A. B. Ed. and four year B. Sc. B. Ed. Course wise students' feedback is collected from final year students of all the above courses as given in following sections.

2.1.1 Student Feedback on M. Ed. course

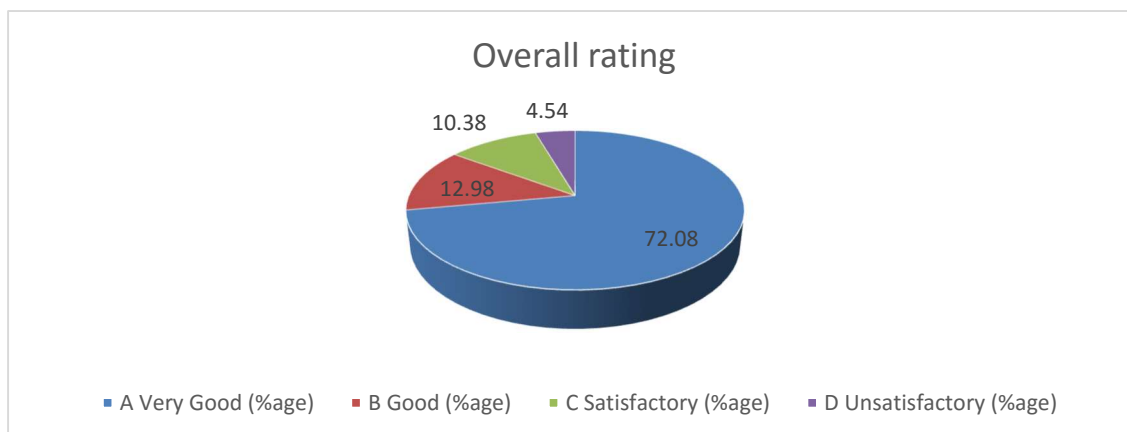
Table no. 1: Student Feedback on M. Ed. course

Sr. No.	Parameters	A Very Good (%age)	B Good (%age)	C Satisfactory (%age)	D Unsatisfactory (%age)
1.	Depth of the course content including project work if any	81.818	9.091	4.545	4.55
2.	Extent of coverage of course	72.727	18.182	9.091	0.00
3.	Applicability/relevance to real life situations	68.182	13.636	13.636	4.55
4.	Learning value (in terms of knowledge, concepts, Manual skills, analytical abilities and broadening perspectives)	72.727	13.636	13.636	0.00
5.	Clarity and relevance of textual reading material	68.182	9.091	13.636	9.09
6.	Relevance of additional source material (Library)	72.727	13.636	4.545	9.09
7.	Extent of effort required by Students	68.182	13.636	13.636	4.55
8.	Overall rating	72.08	12.98	10.38	4.54

Feedback received from the students on the 7 parameters of M.Ed. course:



Overall feedback about the M.Ed. course:



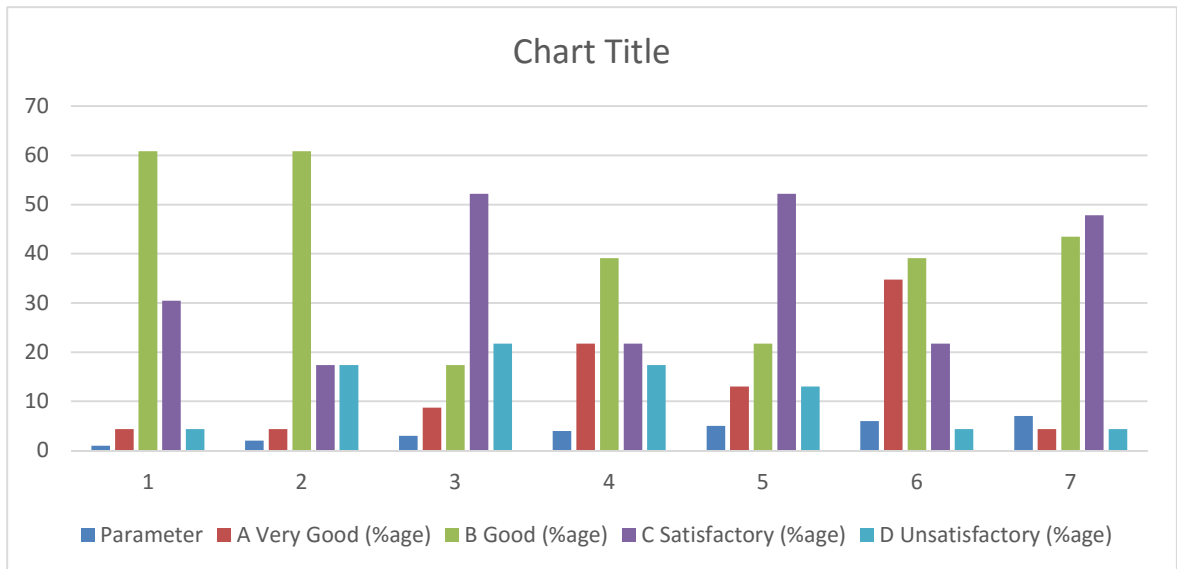
2.1.2 Student Feedback on B. Ed. course

Table no. 2: Student Feedback on B. Ed. course

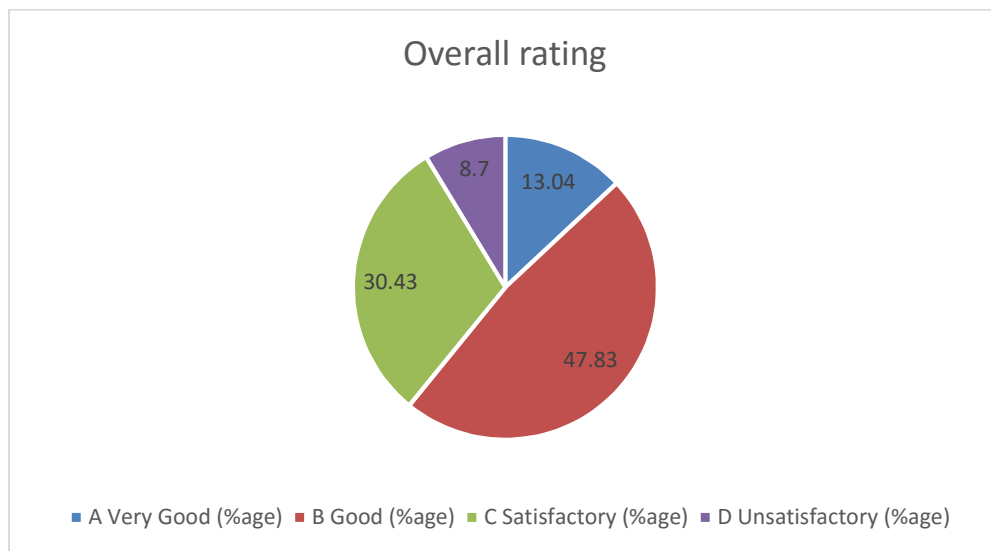
Sr. No.	Parameters	A Very Good (%age)	B Good (%age)	C Satisfactory (%age)	D Unsatisfactory (%age)
1.	Depth of the course content including project work if any	27.27	36.36	18.18	18.18
2.	Extent of coverage of course	36.36	40.00	18.18	5.45
3.	Applicability/relevance to real life situations	60.00	21.82	14.55	3.64
4.	Learning value (in terms of knowledge, concepts, Manual skills, analytical abilities and broadening perspectives)	56.36	20.00	10.91	12.73
5.	Clarity and relevance of textual reading material	45.45	36.36	9.09	9.09
6.	Relevance of additional source material (Library)	47.27	18.18	20.00	14.55

7.	Extent of effort required by Students	45.45	21.82	18.18	14.55
8.	Overall rating	27.27	36.36	18.18	18.18

Feedback received from the students on the 7 parameters of B.Ed. course:



Overall feedback about the B.Ed. course

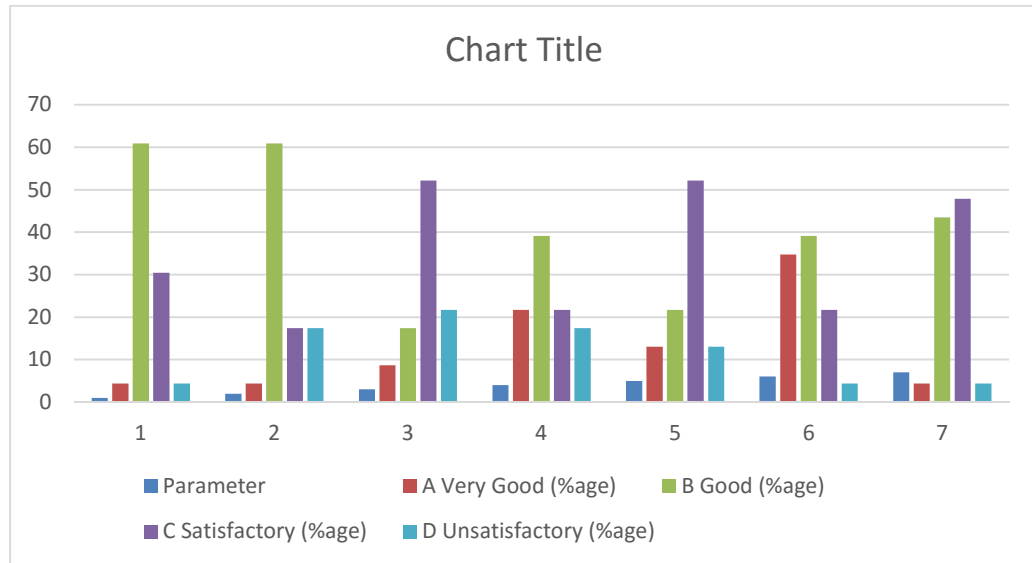


2.1.3 Student Feedback on B. A. B. Ed. course

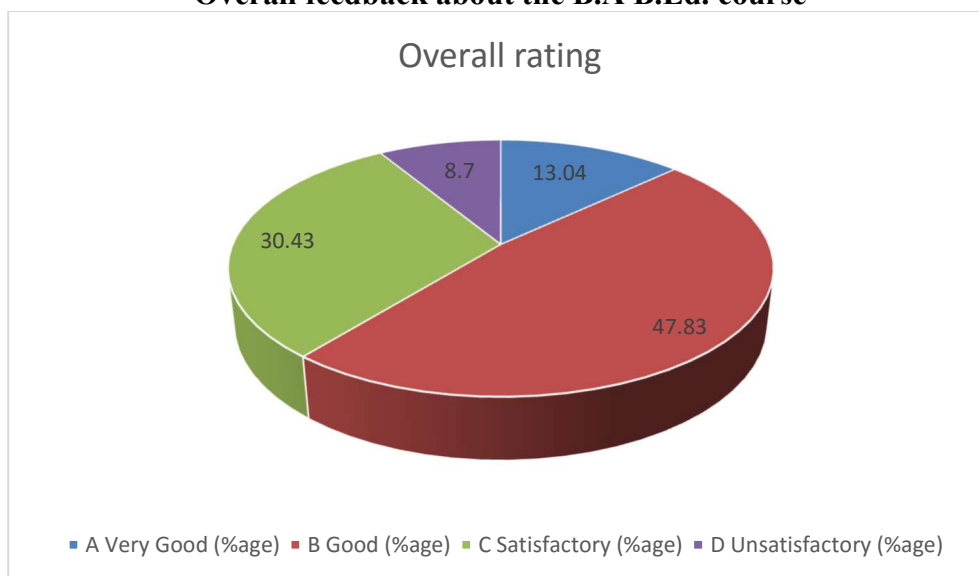
Table no. 3: Student Feedback on B. A. B. Ed. course

Sr. No.	Parameters	A Very Good (%age)	B Good (%age)	C Satisfactory (%age)	D Unsatisfactory (%age)
1.	Depth of the course content including project work if any	41.67	16.67	33.33	8.33
2.	Extent of coverage of course	41.67	21.67	28.33	8.33
3.	Applicability/relevance to real life situations	55.00	36.67	8.33	0.00
4.	Learning value (in terms of knowledge, concepts, Manual skills, analytical abilities and broadening perspectives)	51.67	18.33	20.00	10.00
5.	Clarity and relevance of textual reading material	41.67	33.33	16.67	8.33
6.	Relevance of additional source material (Library)	43.33	23.33	20.00	13.33
7.	Extent of effort required by Students	41.67	25.00	16.67	16.67
8.	Overall rating	41.67	25	20.47	9.29

Feedback received from the students on the 7 parameters of B.A B.Ed. course:



Overall feedback about the B.A B.Ed. course

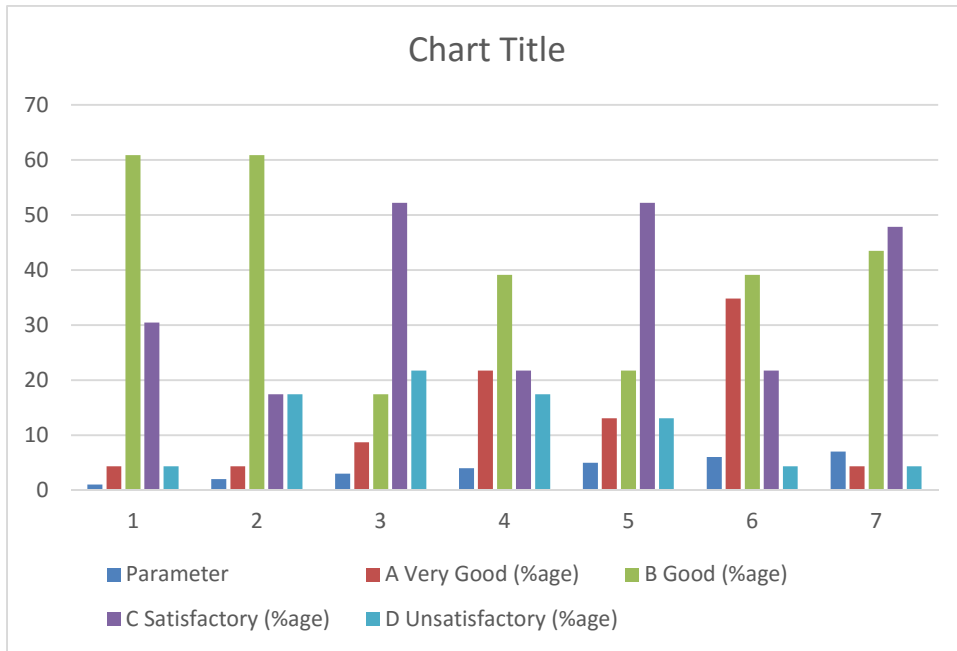


2.1.4 Student Feedback on B. Sc. B. Ed. course

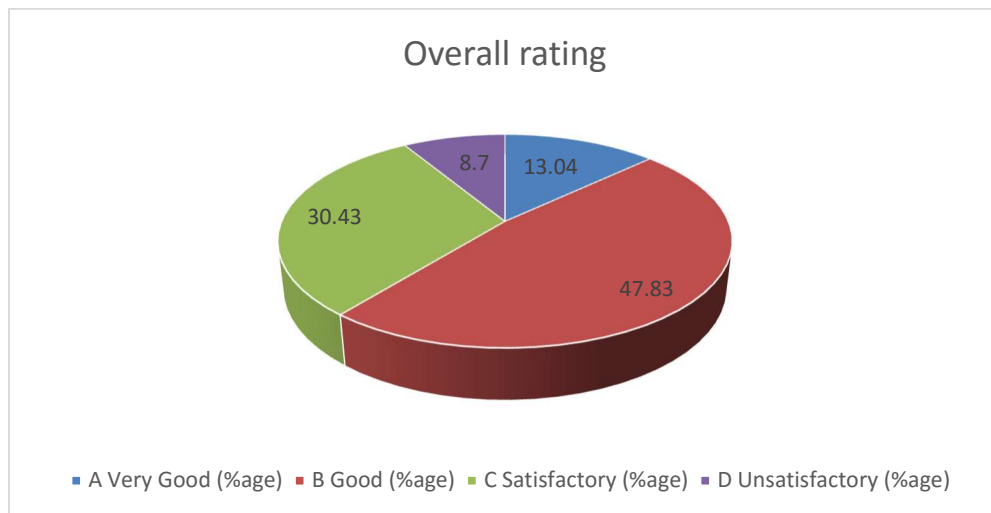
Table no. 4: Student Feedback on B. Sc. B. Ed. course

Sr. No.	Parameters	A Very Good (%age)	B Good (%age)	C Satisfactory (%age)	D Unsatisfactory (%age)
1.	Depth of the course content including project work if any	4.35	60.87	30.43	4.35
2.	Extent of coverage of course	4.35	60.87	17.39	17.39
3.	Applicability/relevance to real life situations	8.70	17.39	52.17	21.74
4.	Learning value (in terms of knowledge, concepts, Manual skills, analytical abilities and broadening perspectives)	21.74	39.13	21.74	17.39
5.	Clarity and relevance of textual reading material	13.04	21.74	52.17	13.04
6.	Relevance of additional source material (Library)	34.78	39.13	21.74	4.35
7.	Extent of effort required by Students	4.35	43.48	47.83	4.35
8.	Overall rating	13.04	47.83	30.43	8.70

Feedback received from the students on the 7 parameters of B.Sc. B.Ed. course:



Overall feedback about the B.Sc. B.Ed. course



Appendix 2: Students' Feedback on the Programme and Teaching

Department: Education

Course: M. Ed

1. The syllabus of each course was			
Adequate	Inadequate	Challenging	Dull
45.45%	9.09%	36.36%	9.09%

2. Background for benefiting from the course was			
More than adequate	Adequate	Inadequate	cannot say
25.2%	53.7%	0%	121%

3. Was the course easy or difficult to understand?			
Easy	Manageable	Difficult	Very difficult
10%	67.8%	22.2%	0%

4. How much of the syllabus was covered in the class?			
85 to 100	70 to 85	55 to 70	less than 55
21.10%	33.30%	23.30%	22.30%

5. What is your opinion about the library material and facilities for the course?			
more than adequate	Adequate	Inadequate	Very Poor
22.2%	44.4%	33.3%	0%

6. To what extent were you able to get material for the prescribed readings?			
Easily	with some difficulty	Not available at all	with great difficulty
12.1%	76.8%	0%	11.1%

7. How well did the teacher prepare for the classes?			
Thoroughly	Satisfactorily	Poorly	Indifferent
54.4%	34.4%	11.1%	0%

8. How well was the teacher able to communicate?			
Always effective	Sometimes effective	Just satisfactorily	generally ineffective
67.8%	10%	22.2%	0%

9. How far the teacher encourages student participation in class?			
Always	Mostly Yes	Sometimes	Not at all
0%	22.2%	55.6%	22.2%

10. If yes, which of the following methods were used?			
Encouraged to raise questions	get involved in discussion in class	Encourage discussion outside class	did not encourage
76.7%	12.2%	0%	11.1%

11. How helpful was the teacher in advising?			
Very helpful	sometimes helpful	not at all helpful	did not advise
67.8%	15.1%	15.1%	0%

12. The teacher's approach can best be described as			
Always courteous	sometimes rude	always indifferent	cannot say
44.4%	33.3%	0%	22.2%

13. Internal assessment was			
Always fair	Sometimes fair	Sometimes unfair	Usually unfair
50.6%	25.2%	14.1%	11.1%

14. What effect do you think the internal assessment will have on your course grade?			
Helps to improve	discouraging	sometimes effective	no special effect
55.6%	0%	22.2%	22.2%

15. How often did the teacher provide feedback on your performance?			
Regularly in time	with helpful comment	Often late	without any comments
11.1%	55.6%	22.2%	11.1%

16. Were your assignments discussed with you?			
Yes, fully	Yes, partly	sometimes discussed	Not discussed at all
33.3%	33.3%	22.2%	11.1%

17. Were you provided with a course contributory lecture too at the beginning?	
Yes	No
44.3%	55.7%

Department: Education

Course: B. Ed

1. The syllabus of each course was			
Adequate	Inadequate	Challenging	Dull
75.8%	0%	24.2%	0%

2. Background for benefiting from the course was			
More than adequate	Adequate	Inadequate	cannot say
54.4%	34.4%	0%	11.1%

3. Was the course easy or difficult to understand?			
Easy	Manageable	Difficult	Very difficult
18.1%	81.9%	0%	0%

4. How much of the syllabus was covered in the class?			
85 to 100	70 to 85	55 to 70	less than 55
33.3%	44.4%	11.1%	11.1%

5. What is your opinion about the library material and facilities for the course?			
more than adequate	Adequate	Inadequate	Very Poor
22.2%	55.6%	22.2%	0%

6. To what extent were you able to get material for the prescribed readings?			
Easily	with some difficulty	Not available at all	with great difficulty
7%	70.8%	11.1%	11.1%

7. How well did the teacher prepare for the classes?			
Thoroughly	Satisfactorily	Poorly	Indifferent
44.4%	22.2%	22.2%	11.1%

8. How well was the teacher able to communicate?			
Always effective	Sometimes effective	Just satisfactorily	generally ineffective
10.1%	67.7%	22.2%	0%

9. How far the teacher encourages student participation in class?			
Always	Mostly Yes	Sometimes	Not at all
22.2%	66.7%	11.1%	0%

10. If yes, which of the following methods were used?			
Encouraged to raise questions	get involved in discussion in class	Encourage discussion outside class	did not encourage
33.3%	66.7%	0%	0%

11. How helpful was the teacher in advising?			
Very helpful	sometimes helpful	not at all helpful	did not advise
66.7%	22.2%	11.1%	0%

12. The teacher's approach can best be described as			
Always courteous	sometimes rude	always indifferent	cannot say
90.90%	0%	8.10%	1%

13. Internal assessment was			
Always fair	Sometimes fair	Sometimes unfair	Usually unfair
55.6%	33.3%	0%	11.1%

14. What effect do you think the internal assessment will have on your course grade?			
Helps to improve	discouraging	sometimes effective	no special effect
90.90%	0%	8.10%	1%

15. How often did the teacher provide feedback on your performance?			
Regularly in time	with helpful comment	Often late	without any comments
44.4%	44.4%	11.1%	0%

16. Were your assignments discussed with you?			
Yes, fully	Yes, partly	sometimes discussed	Not discussed at all
50.0%	25.0%	12.5%	12.5%

17. Were you provided with a course contributory lecture too at the beginning?	
Yes	No
55.5%	44.5%

1. The syllabus of each course was			
Adequate	Inadequate	Challenging	Dull
75.8%	0%	24.2%	0%

2. Background for benefiting from the course was			
More than adequate	Adequate	Inadequate	cannot say
55.0%	20.0%	0%	25.0%

3. Was the course easy or difficult to understand?			
Easy	Manageable	Difficult	Very difficult
12.5%	87.5%	10.0%	11.0%

4. How much of the syllabus was covered in the class?			
85 to 100	70 to 85	55 to 70	less than 55
12.5%	12.5%	75.0%	0.0%

5. What is your opinion about the library material and facilities for the course?			
more than adequate	Adequate	Inadequate	Very Poor
50.0%	37.5%	0.0%	12.5%

6. To what extent were you able to get material for the prescribed readings?			
Easily	with some difficulty	Not available at all	with great difficulty
4.0%	75.0%	10.5%	10.5%

7. How well did the teacher prepare for the classes?			
Thoroughly	Satisfactorily	Poorly	Indifferent
32.5%	42.5%	25.0%	0.0%

8. How well was the teacher able to communicate?			
Always effective	Sometimes effective	Just satisfactorily	generally ineffective
40.50%	23.00%	24.00%	12.50%

9. How far the teacher encourages student participation in class?			
Always	Mostly Yes	Sometimes	Not at all
40.50%	25%	30.50%	0.00%

10. If yes, which of the following methods were used?			
Encouraged to raise questions	get involved in discussion in class	Encourage discussion outside class	did not encourage
25.0%	60.5%	2.0%	12.5%

11. How helpful was the teacher in advising?			
Very helpful	sometimes helpful	not at all helpful	did not advise
40.5%	37.5%	0.0%	23.0%

12. The teacher's approach can best be described as			
Always courteous	sometimes rude	always indifferent	cannot say
40.5%	8.5%	37.5%	12.5%

13. Internal assessment was			
Always fair	Sometimes fair	Sometimes unfair	Usually unfair
48.50%	12.50%	37.50%	1.50%

14. What effect do you think the internal assessment will have on your course grade?			
Helps to improve	discouraging	sometimes effective	no special effect
37.5%	12.5%	0.0%	50.0%

15. How often did the teacher provide feedback on your performance?			
Regularly in time	with helpful comment	Often late	without any comments
12.5%	25.0%	25.0%	37.5%

16. Were your assignments discussed with you?			
Yes, fully	Yes, partly	sometimes discussed	Not discussed at all
12.5%	50.0%	25.0%	12.5%

17. Were you provided with a course contributory lecture too at the beginning?	
Yes	No
75.0%	25.0%

Department: Science and Mathematics

Course: B. Sc. B. Ed. (Phy)

1. The syllabus of each course was			
Adequate	Inadequate	Challenging	Dull
100%	0.0%	0.0%	0.0%

2. Background for benefiting from the course was			
More than adequate	Adequate	Inadequate	cannot say
0.0%	66.7%	0.0%	33.3%

3. Was the course easy or difficult to understand?			
Easy	Manageable	Difficult	Very difficult
0.0%	100.0%	0.0%	0.0%

4. How much of the syllabus was covered in the class?			
85 to 100	70 to 85	55 to 70	less than 55
26.7%	40.0%	0.0%	13.3%

5. What is your opinion about the library material and facilities for the course?			
more than adequate	Adequate	Inadequate	Very Poor
48.50%	32.50%	17.50%	1.50%

6. To what extent were you able to get material for the prescribed readings?			
Easily	with some difficulty	Not available at all	with great difficulty
50.0%	50.0%	0.0%	0.0%

7. How well did the teacher prepare for the classes?			
Thoroughly	Satisfactorily	Poorly	Indifferent
0.0%	66.7%	33.3%	0.0%

8. How well was the teacher able to communicate?			
Always effective	Sometimes effective	Just satisfactorily	generally ineffective
21.0%	33.3%	33.3%	13.3%

9. How far the teacher encourages student participation in class?			
Always	Mostly Yes	Sometimes	Not at all
20.0%	33.3%	33.3%	13.3%

10. If yes, which of the following methods were used?			
Encouraged to raise questions	get involved in discussion in class	Encourage discussion outside class	did not encourage
33.3%	50.0%	16.7%	0.0%

11. How helpful was the teacher in advising?			
Very helpful	sometimes helpful	not at all helpful	did not advise
20.0%	33.3%	33.3%	13.3%

12. The teacher's approach can best be described as			
Always courteous	sometimes rude	always indifferent	cannot say
33.3%	0.0%	16.7%	50.0%

13. Internal assessment was			
Always fair	Sometimes fair	Sometimes unfair	Usually unfair
20.0%	33.3%	33.3%	13.3%

14. What effect do you think the internal assessment will have on your course grade?			
Helps to improve	discouraging	sometimes effective	no special effect
50.0%	0.0%	33.3%	16.7%

15. How often did the teacher provide feedback on your performance?			
Regularly in time	with helpful comment	Often late	without any comments
0.0%	33.3%	50.0%	16.7%

16. Were your assignments discussed with you?			
Yes, fully	Yes, partly	sometimes discussed	Not discussed at all
26.7%	26.7%	10.0%	36.7%

17. Were you provided with a course contributory lecture too at the beginning?	
Yes	No
66.7%	33.3%

Department: Science and Mathematics

Course: B. Sc. B. Ed. (Bio)

1. The syllabus of each course was			
Adequate	Inadequate	Challenging	Dull
54.5%	0.0%	39.1%	6.4%

2. Background for benefiting from the course was			
More than adequate	Adequate	Inadequate	cannot say
10.0%	81.8%	0.0%	8.2%

3. Was the course easy or difficult to understand?			
Easy	Manageable	Difficult	Very difficult
9.1%	72.7%	18.2%	0.0%

4. How much of the syllabus was covered in the class?			
85 to 100	70 to 85	55 to 70	less than 55
39.1%	27.3%	18.2%	15.5%

5. What is your opinion about the library material and facilities for the course?			
more than adequate	Adequate	Inadequate	Very Poor
28.2%	46.4%	17.3%	8.2%

6. To what extent were you able to get material for the prescribed readings?			
Easily	with some difficulty	Not available at all	with great difficulty
9.1%	63.6%	18.2%	9.1%

7. How well did the teacher prepare for the classes?			
Thoroughly	Satisfactorily	Poorly	Indifferent
9.1%	36.4%	36.4%	18.2%

8. How well was the teacher able to communicate?			
Always effective	Sometimes effective	Just satisfactorily	generally ineffective
9.1%	27.3%	18.2%	45.5%

9. How far the teacher encourages student participation in class?			
Always	Mostly Yes	Sometimes	Not at all
0.0%	18.2%	36.4%	45.5%

10. If yes, which of the following methods were used?			
Encouraged to raise questions	get involved in discussion in class	Encourage discussion outside class	did not encourage
0.0%	45.5%	0.0%	54.5%

11. How helpful was the teacher in advising?			
Very helpful	sometimes helpful	not at all helpful	did not advise
18.2%	54.5%	9.1%	18.2%

12. The teacher's approach can best be described as			
Always courteous	sometimes rude	always indifferent	cannot say
27.3%	45.5%	18.2%	9.1%

13. Internal assessment was			
Always fair	Sometimes fair	Sometimes unfair	Usually unfair
9.1%	9.1%	36.4%	45.5%

14. What effect do you think the internal assessment will have on your course grade?			
Helps to improve	discouraging	sometimes effective	no special effect
45.5%	9.1%	36.4%	9.1%

15. How often did the teacher provide feedback on your performance?			
Regularly in time	with helpful comment	Often late	without any comments
9.1%	18.2%	45.5%	27.3%

16. Were your assignments discussed with you?			
Yes, fully	Yes, partly	sometimes discussed	Not discussed at all
0.0%	9.1%	18.2%	72.7%

17. Were you provided with a course contributory lecture too at the beginning?	
Yes	No
27.3%	72.7%